

# What will my new Class Connection Intercom Look Like?

In most cases, the Class Connection Intercom simply becomes an integrated part of a facility's telephone system – simple and familiar. Behind the scenes, an installed Class Connection Intercom will consist of a small wall or rack mounted card cage (figure 1) and wire connection blocks (figure 2).

***In most installations, the card cage and wire connection blocks are installed in one or more equipment rooms and are therefore not visible to the user.***

System users will access the intercom through their telephone. System administration such as schedule management and music distribution is accomplished through any network PC. An optional wall mounted LED office display (figure 3) may be installed to show the system date and time and information on calls to the office that have been initiated via classroom call buttons.

The optional program distribution panel (figure 4) provides users with a convenient microphone jack; system pushbutton inputs; bass, treble, volume control and monitor speaker for 3 music inputs.

The appearance of classroom and common area equipment will vary. There are many choices. Classroom equipment will consist of speakers, and optional call buttons and clocks. Common area equipment for hallways, cafeteria, gym and outside areas may include various styles of speakers and clocks.

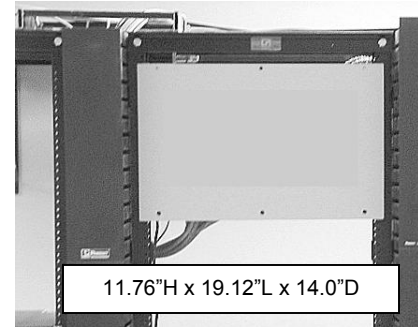


Figure 1 – Card Cage



Figure 2 – Wire Connection Blocks



Figure 4 – Program Distribution Panel  
(5.25\"H x 19\"L x 2\"D)



Figure 3 – Office Display (4.5\"H x 28.9\"L x 2.2\"D)

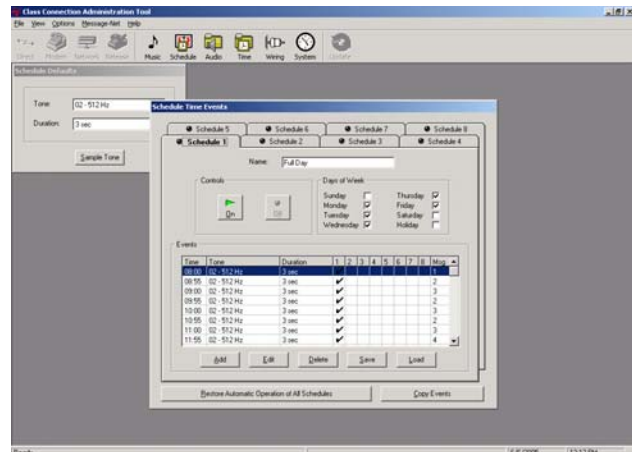


Figure 5 – PC Administration